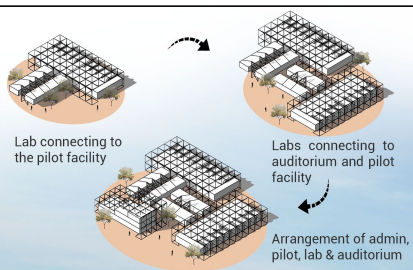
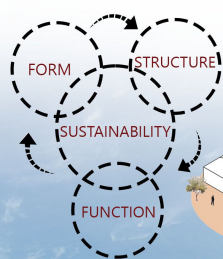


1 CONCEPT



Steel is a strong, resilient, enduring, and backbone of the construction industry, but **steel doesn't become steel without people.** The spaces are thoughtfully laid out with collaboration, energy, and excitement in mind. The purpose of interaction is to collaborate and generate more ideas much more quickly.



All form are designed according to their function along with sustainable consideration. The Fort acts as a supporting spaces for interactive (Agora) and Neoteric spaces



1. Admin block from the entrance



2. Auditorium from parking



3. Water body and interactive space



4. Pilot facility

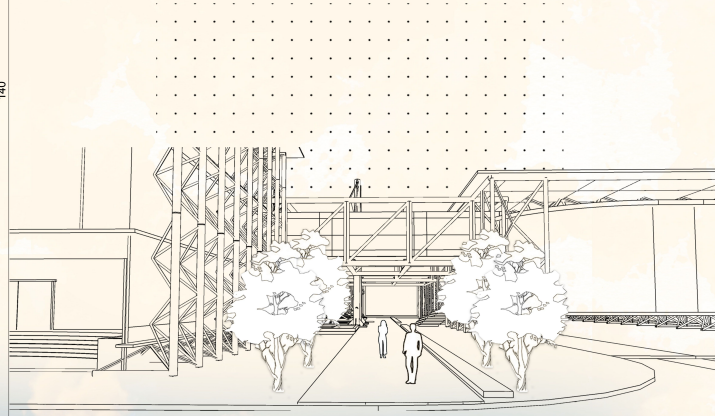
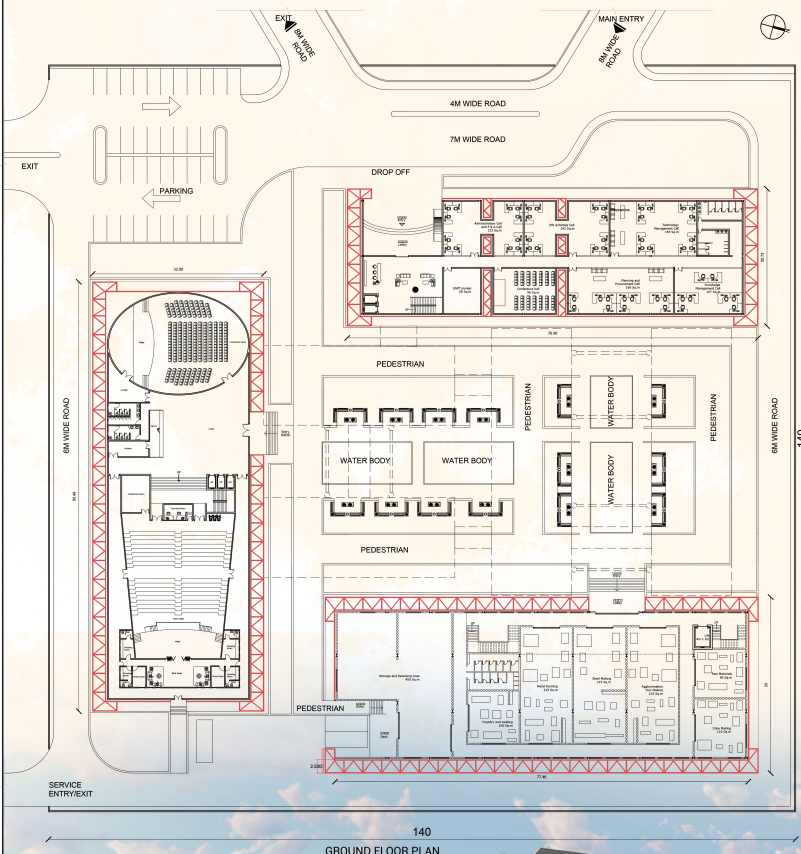
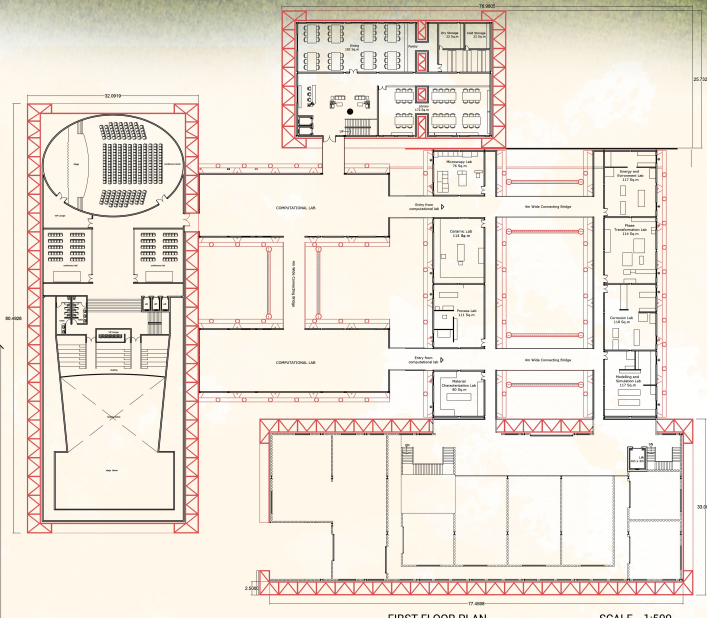
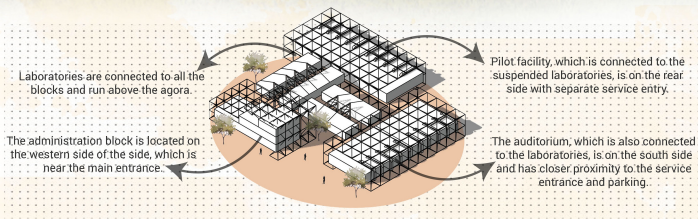


5. Suspended Laboratory

SCALE- 1:300



SECTIONAL VIEW - AA'



MICRO CONCEPT



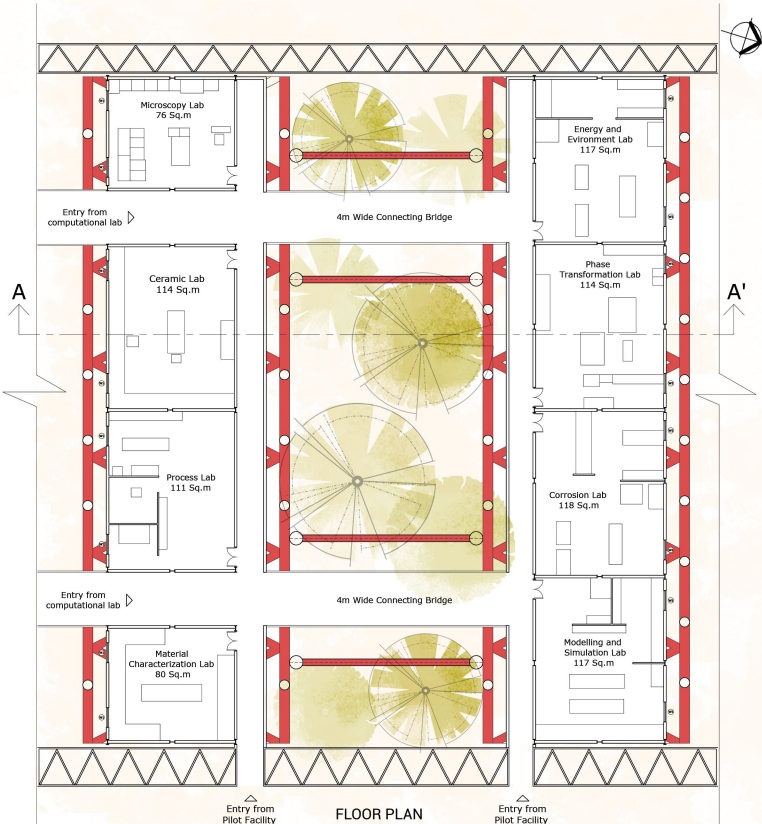
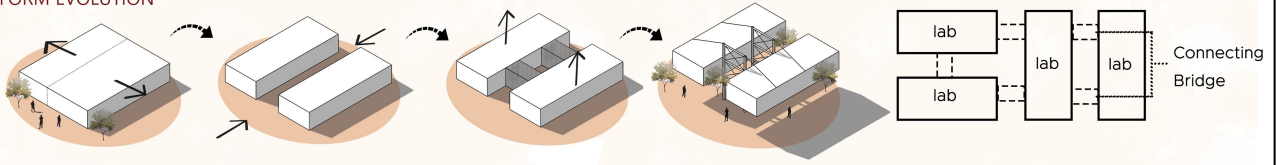
The laboratory space is suspended by a central tubular steel column-assisted span-tension structure. The structure is supported by tension tie rods from the spine towers.

The design concept included:
 The ability to be built quickly
 The ability to be expanded or otherwise adapted without disruption to production
 Pre-fabricated structure, sustainable

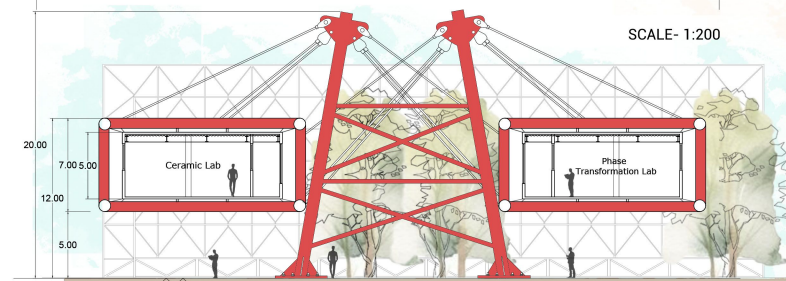
The laboratories are supported by the columns and the Forts (pilot, auditorium—supporting spaces). The laboratories are connected to each other with connecting bridges, which makes the spaces accessible from any corner of the building.

FORM EVOLUTION

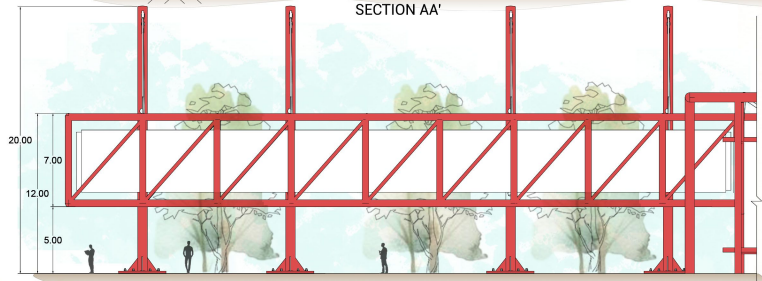
NEOTERIC ZONE
 SPACE FOR INNOVATION
 AND CREATIVITY



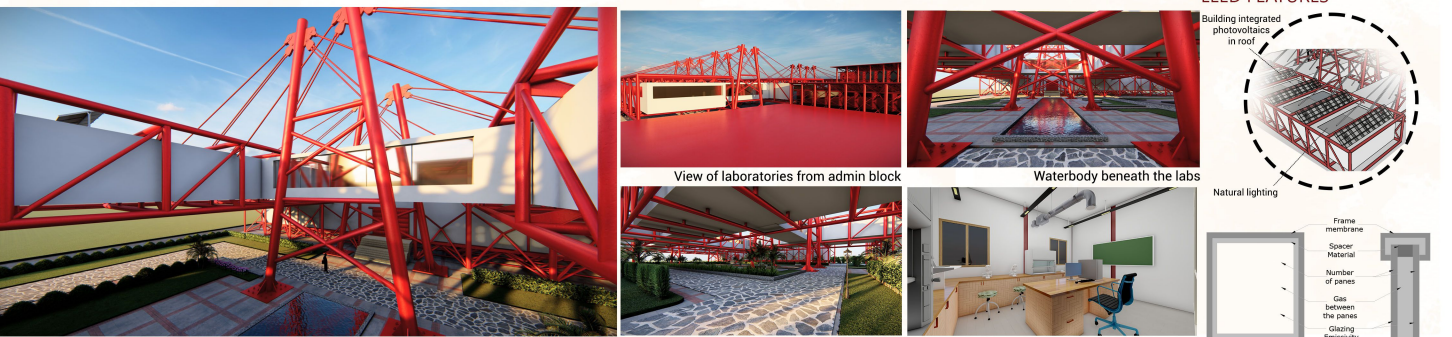
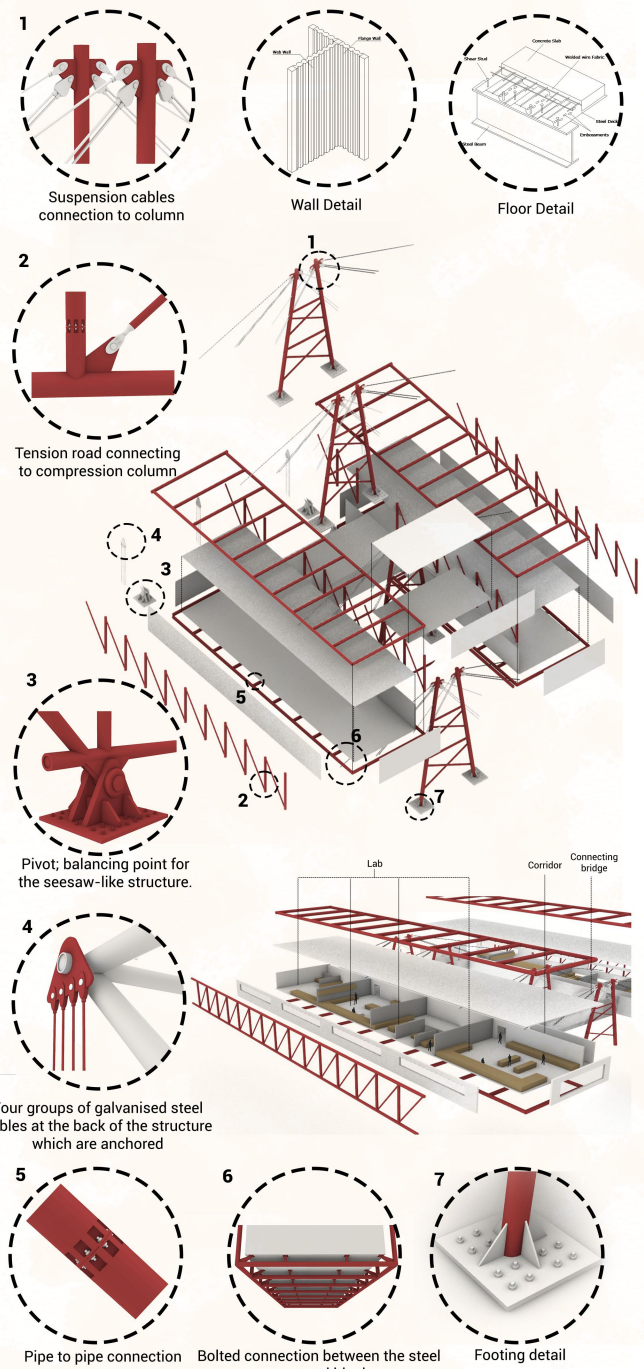
FLOOR PLAN



SECTION AA'



SOUTH ELEVATION



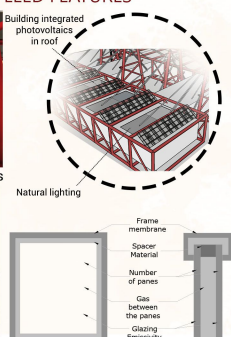
View of suspended laboratories and connecting bridges

View of laboratories from admin block

landscape and walkways beneath the labs

Waterbody beneath the labs

Interior view



MICRO CONCEPT



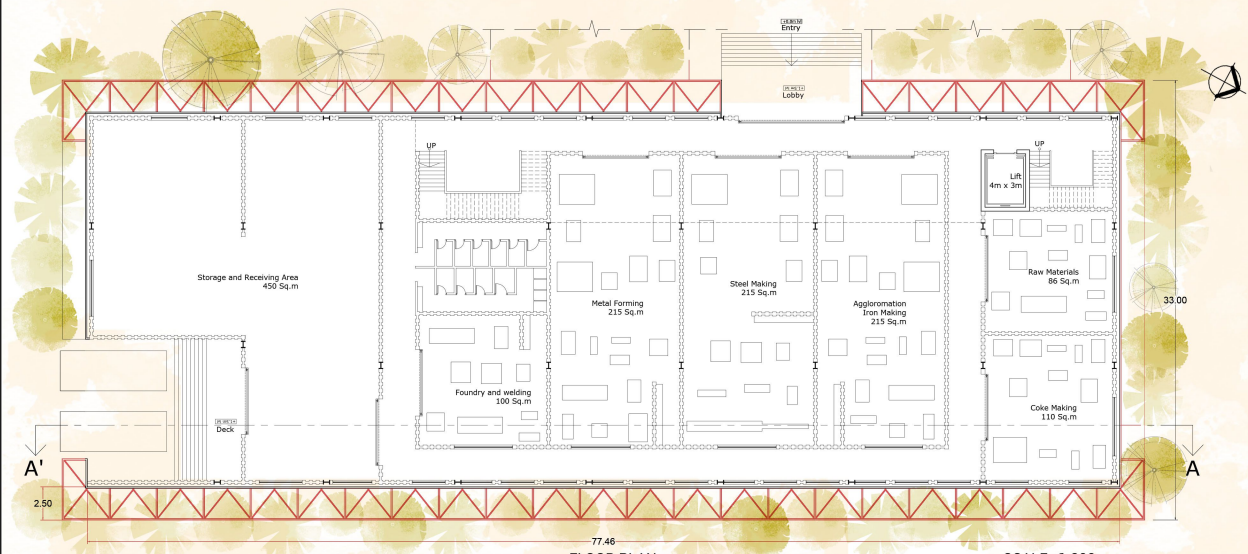
FORTS

SUPPORTING AND WORK SPACES

FORM EVOLUTION

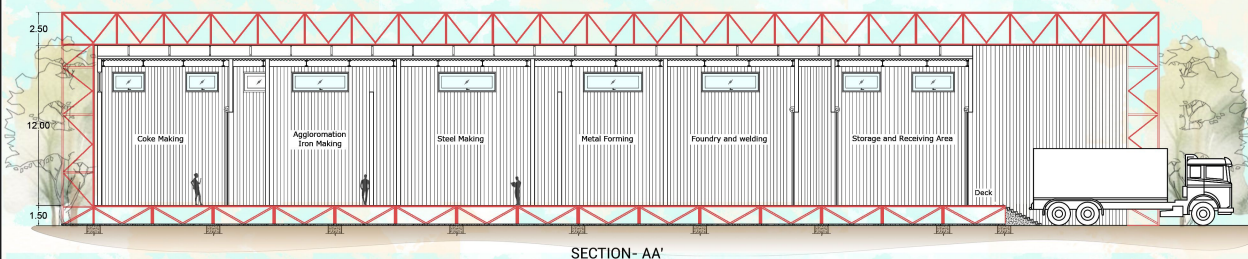


The design concept was to create a flexible design systems. The solution was a streamlined structural framework that suspended a container.
 The interior of the building is column-free and contained within a box suspended from tubular steel portal frames spanning 77 meters.

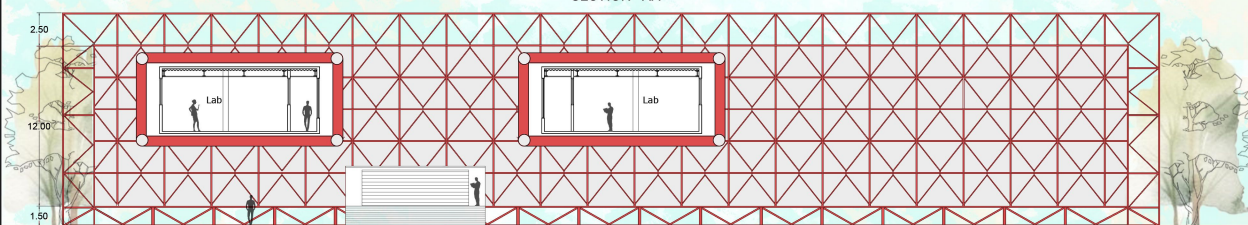


FLOOR PLAN

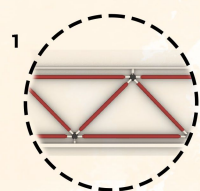
SCALE- 1:200



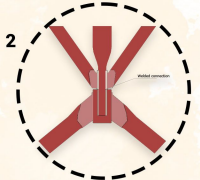
SECTION- AA'



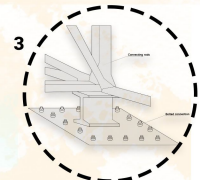
ELEVATION



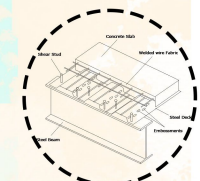
connections of the space outer space frames



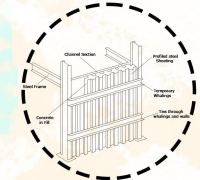
Welded connection of rods



Footing detail



Floor Detail



Wall Detail



View of service entry



Walkways near pilot facility, and the view of entrance



Service ducts in the rear side

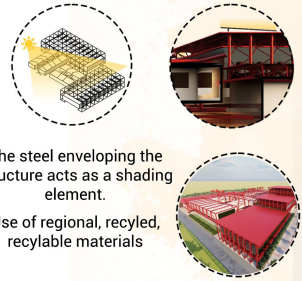


Interior view 1

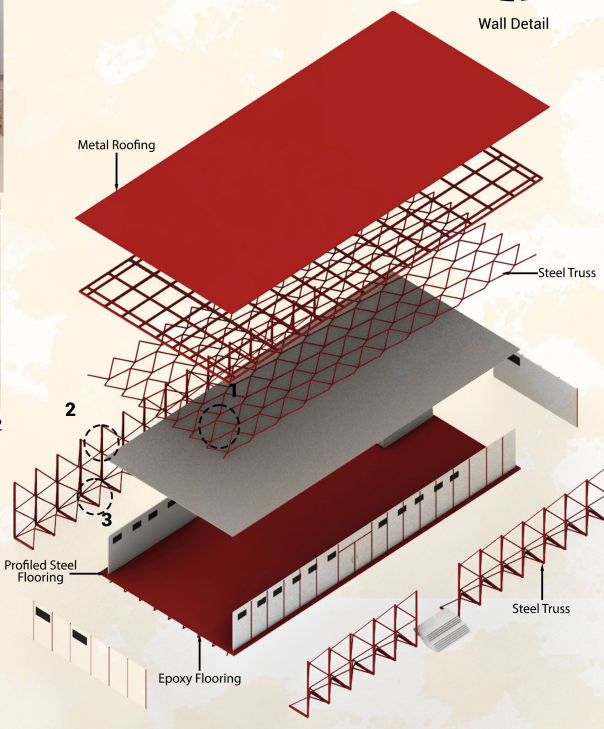


Interior view 2

LEED FEATURES



The steel enveloping the structure acts as a shading element.
 Use of regional, recycled, recyclable materials



5 ADMINISTRATION BLOCK

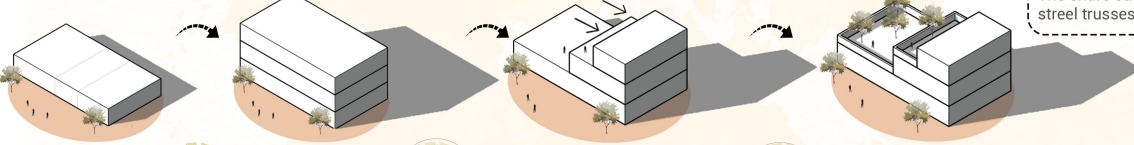
MICRO CONCEPT



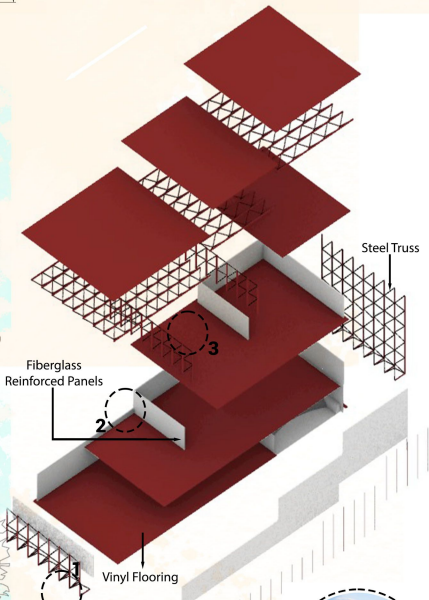
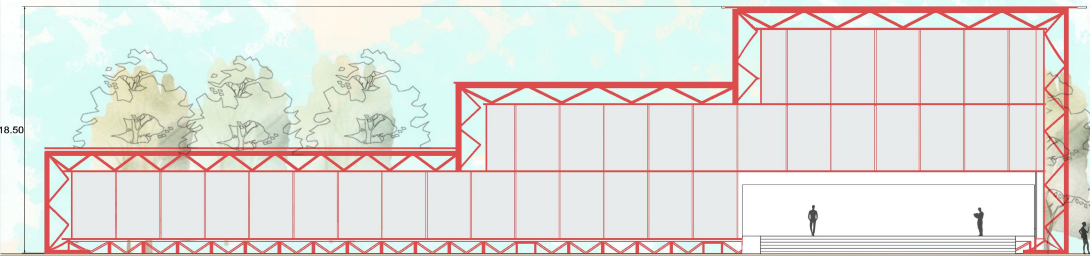
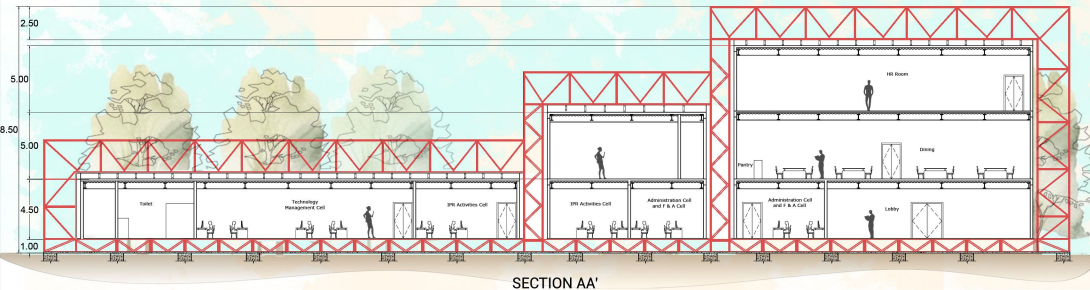
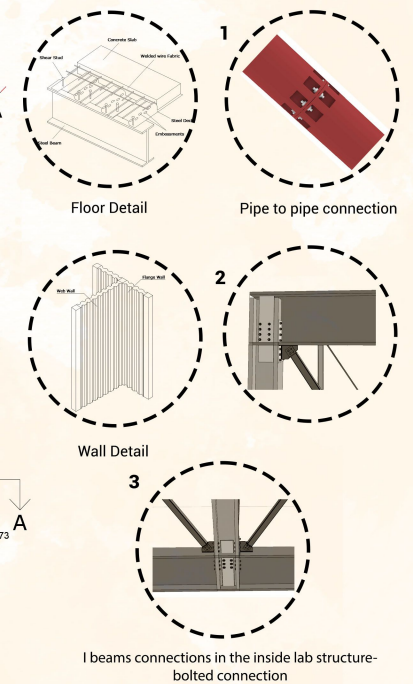
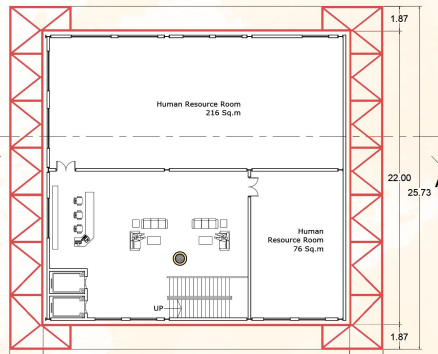
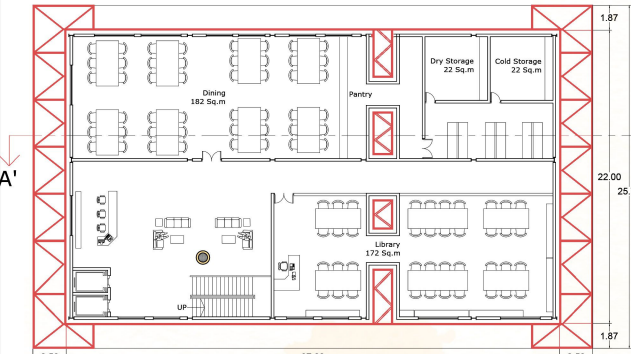
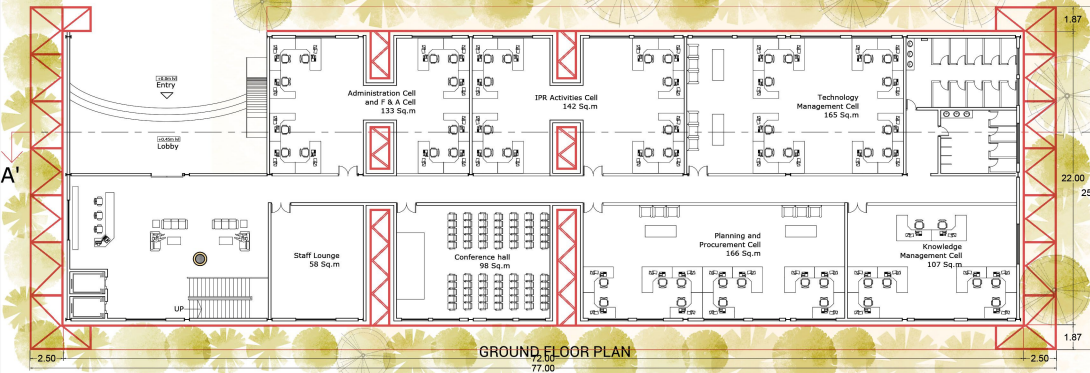
FORTS

SUPPORTING AND WORK SPACES

FORM EVOLUTION



The block is stacked into 3 level based on their functions. The entire structure is caged by tubular steel trusses.



LEED FEATURES

Use of regional, recycled, recyclable materials

Long and wide windows allows day lighting which reduces the dependence of artificial lighting.

Natural ventilation, low emitting materials - improves indoor air quality and also reduces the need of HVAC



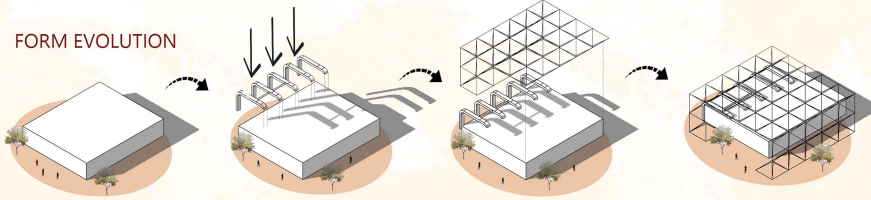
6 AUDITORIUM

MICRO CONCEPT

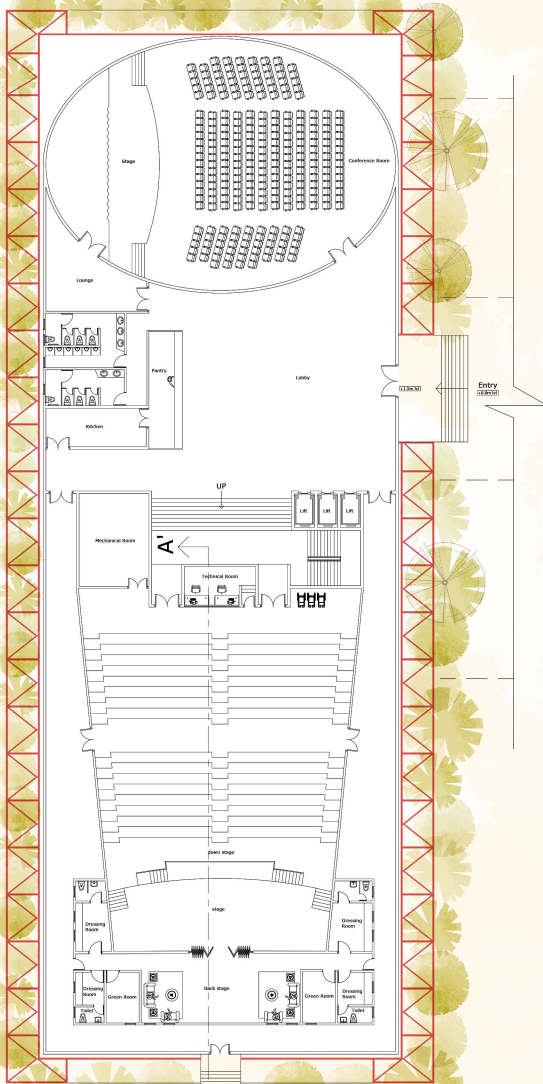


AGORA
INTERACTION AND GATHERING SPACES

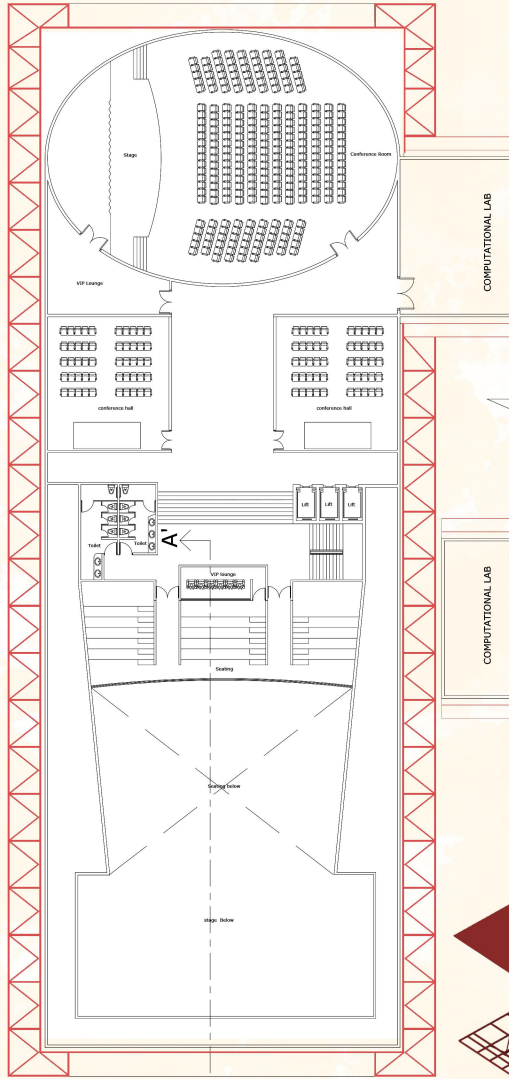
FORM EVOLUTION



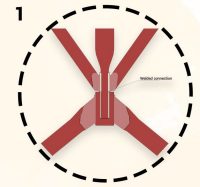
- The design concept was a streamlined structural framework like the pilot facility.
- The interior of the building is column-free and contained within a box suspended from tubular steel portal frames.



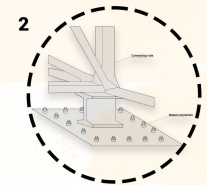
GROUND FLOOR PLAN



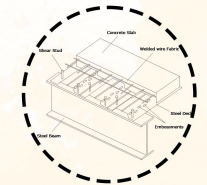
FIRST FLOOR PLAN



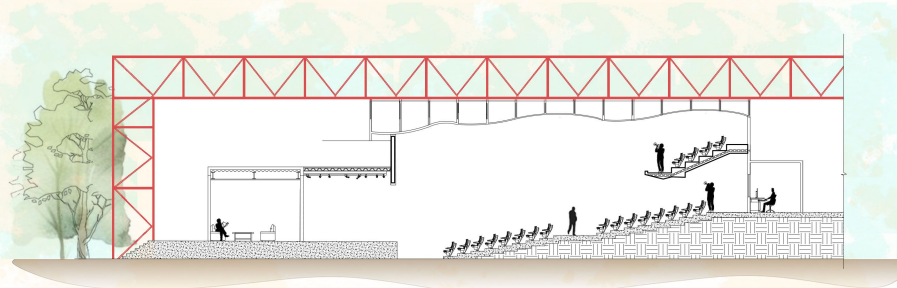
Welded connection of rods



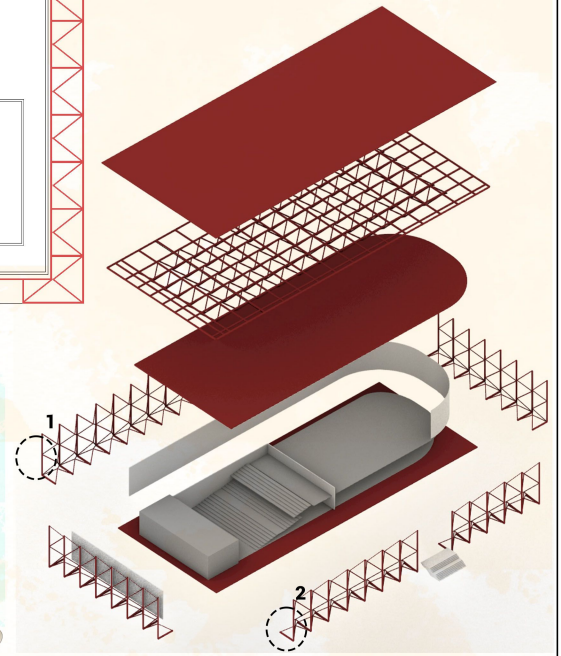
Footing detail



Floor detail



SECTION AA'



View from car parking



Entrance of auditorium



Landscape near auditorium



Interior view 1



Interior view 2

LEED FEATURES

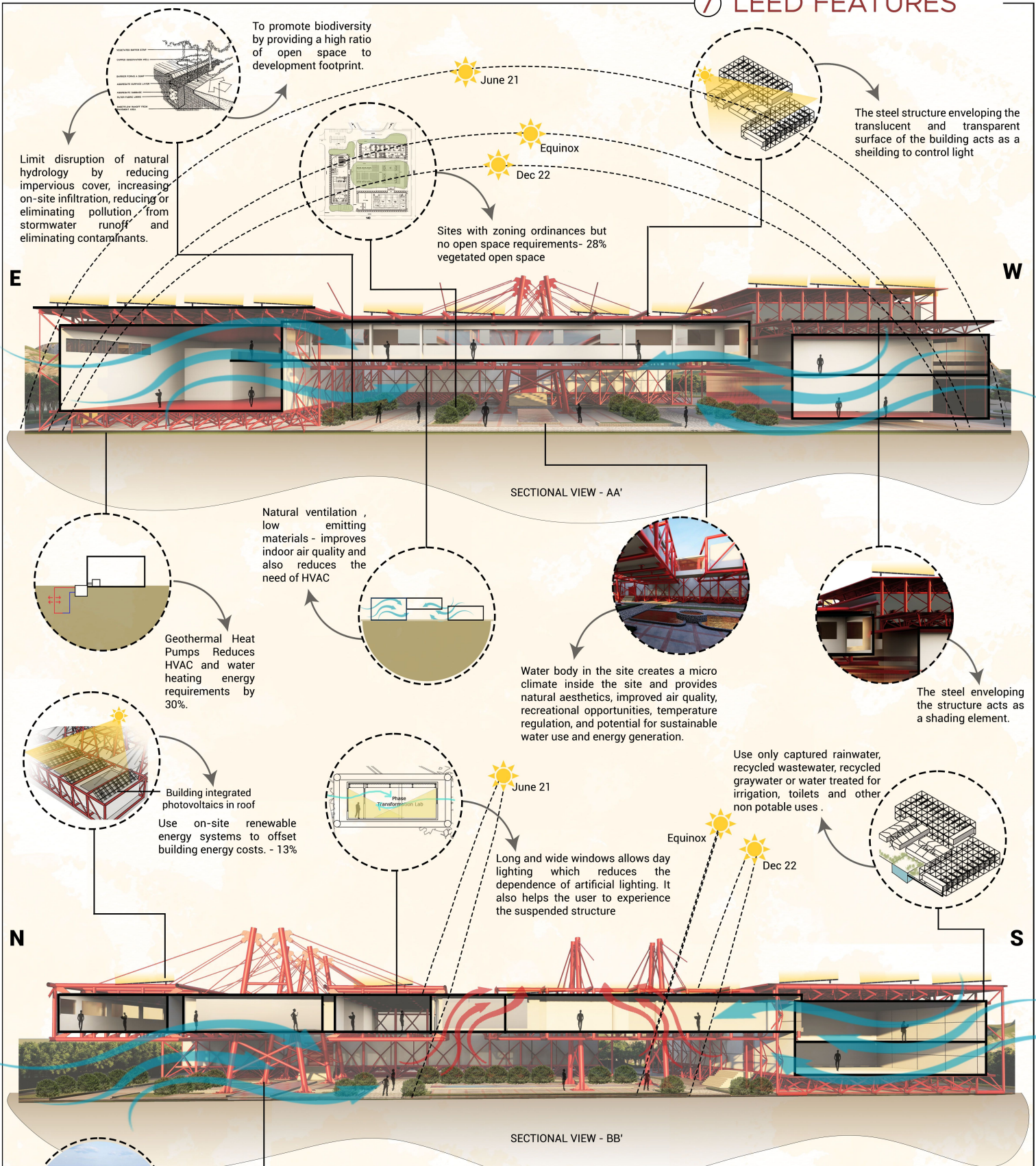


Building integrated photovoltaics in roof



Use of regional, recycled, recyclable materials

7 LEED FEATURES



SECTIONAL VIEW - AA'

SECTIONAL VIEW - BB'

TOTAL POINTS- 81

<p>SUSTAINABLE SITES (17)</p> <ol style="list-style-type: none"> 1. Site selection (1/1) 2. Development density and community connectivity (5/5) 3. Site development - maximize open space(1/1) 4. Site development - protect or restore habitat(1/1) 5. Stormwater management- quantity(1/1) and quality (1/1) control 6. Light pollution reduction (1/1) 7. Alternative transport (6/12) <p>WATER EFFICIENCY (9)</p> <ol style="list-style-type: none"> 1. Water efficient landscaping (4/4) 2. Water use reduction (3/4) 3. Innovative wastewater technologies (2/2) 	<p>ENERGY AND ATMOSPHERE (33)</p> <ol style="list-style-type: none"> 1. Optimize energy performance (19/19) 2. On-site renewable energy (7/7) 3. Measurement and verification (3/3) 4. Enhanced commissioning (2/2) 5. Green power (2/2) <p>MATERIAL & RESOURCE (6)</p> <ol style="list-style-type: none"> 1. Construction waste management (2/2) 2. Materials reuse (1/2) 3. Recycled content (1/2) 4. Regional materials (2/2) <p>INNOVATION (4)</p> <ol style="list-style-type: none"> 1. Innovation in design (+3) 2. LEED Accredited Professional (+1) 	<p>INDOOR AIR QUALITY(8)</p> <ol style="list-style-type: none"> 1. Daylight and views - daylight (1/1) 2. Daylight and views - views (1/1) 3. Low-emitting materials (4/4) 4. Naturally ventilated spaces (1/1) 5. Outdoor air delivery monitoring (1/1) <p>REGIONAL PRIORITY CREDITS (4)</p> <ol style="list-style-type: none"> 1. Measurement and verification (+1) 2. Water efficient landscaping (+1) 3. Innovative wastewater technologies (+1)
---	---	--